



# The North of Scotland Welsh Pony and Cob Association

## SUMMER SHOW Sunday 4th June 2023 9 am Start

To be held at Turriff Showground, The Haughs, Queens Road, Turriff, AB53 4EF

Closing date for entries: Online 28th May <https://nswpca.lite.events>  
By post: 25th May Send to: The NSWPCA Secretary, Granite Croft, New Byth, Turriff. AB53 5XQ

Enquiries to: [info@nswpca.co.uk](mailto:info@nswpca.co.uk)

***\*Please note the food van is cash only\****

<u>PRE ENTRY FEES</u>	<u>ENTRIES ON THE DAY - CASH ONLY</u>
Breed Classes: £12	£15 - for additional classes if you have already pre-entered for other classes (Workers £18)
Working Hunter Classes: £15	£17 - If you have NOT pre entered any classes (Workers £20)
All other Classes: £12	Foal Classes: £8
Foal Classes £5	

JUDGES				
WELSH	SHETLAND	M & M	MIXED CLASSES	WORKINGHUNTER
Lorraine Clynes Thomas (Cheshmere)	Jane Barry (Kinkell)	Jane Barry (Kinkell)	Abbie Ryce	Kirsty Errington Anderson

### AFFILIATED TO:

THE NATIONAL WELSH CHAMPIONSHIP SHOW, SHETLAND PONY STUD BOOK SOCIETY & THE CALEDONIAN CHAMPIONSHIPS

Ridden & In Hand classes for registered & unregistered horses/ponies  
Welsh, Partbred Welsh, Mixed M & M, Shetland, Arab/Partbred Arab & Mixed Youngstock, Veterans, Cobs, Coloured, M&M type, Show Hunter/Show Pony, Hack/Riding Horse/Show Hunter L/R & F/R, Young Handlers, Novice & Open Ridden & Working Hunter

***\*\*£100 PRIZE FUND\*\****

***SUPREME CHAMPIONS £35 & RESERVE SUPREME CHAMPIONS £15***

***Vouchers generously donated by Galloway & MacLeod Ltd***



### **FIRST AID COVER**

*First Aid cover in the form of an organisation will not be provided. Members of the Secretarial/Organisation team have First Aid at Work qualifications. There will be no charge for First Aid. By entering the classes and signing the entry form you have declared you have read and accepted this*

### **NSWPCA WELSH MEDALS**

The Committee are disappointed by the recent change in the Bronze Medal criteria set out by The Welsh Pony and Cob Society. The association will continue to provide Welsh classes & bring in Panel Judges from outside Scotland in the hope we can encourage exhibitors to keep entering with the view to regaining our medal status in the future. NSWPCA Medals will be presented to all 5 section champions. Exhibitors/owners **do not** have to be a member or become a member of WPCS to receive NSWPCA medals but ponies & cobs must be registered to enter.

**Please support these classes to avoid permanent loss of the only  
Bronze Medal show in the North of Scotland**

**This Show offers qualification for  
THE NATIONAL WELSH CHAMPIONSHIP SHOW**

**6th August 2023. 3 Counties Showground, Malvern.**

**See Sections relevant to registered Welsh breeds (In Hand & Ridden) for qualification details.  
Qualifiers will be directly contacted after this show with details of qualification and entry details.  
For Show Details and Schedule see our Facebook page or [nationalwelshshow.co.uk](http://nationalwelshshow.co.uk)**

**In the interest of safety all stallions & colts 2 years old & over must be suitably bitted & led by a handler that has attained their 14th birthday before 1st January of the current year.**

**RING 1 - 9AM START Judge: Lorraine Clynes Thomas**

#### **WELSH SECTION A**

Class 1 - Broodmare, Barren Mare & Gelding 4 years & over (Class will be split if sufficient entries)

Class 2 - Foal – colt or filly eligible for registration (progeny of Broodmare entered in class 1)

Class 3 - Yearling colt, filly or gelding

Class 4 - 2 & 3yr old colt, filly or gelding

Class 5 - Stallion 4 years & over

**Sec A Youngstock Championship:** 1st & 2nd from classes 2 - 4 eligible - **Kindly sponsored by Thistleview Stud**

*Waitwith Shield will be presented to the Sec A Youngstock Champion*

**Adult Championship:** 1st & 2nd from classes 1 & 5 eligible - **Kindly sponsored by Thistleview Stud**

*The Bryndefaid Trophy will be presented to the Adult Champion*

**Sec A Medal Championship:** Youngstock Ch & Res & Adult Ch & Res eligible

*Thistleview Stud Trophy will be presented to the Champion Sec. A - **Kindly sponsored by Thistleview Stud***

*This Section is a qualifier for The National Welsh Championship Show 2023 - National Section A In-Hand Championship sponsored by Greenlands Insurance Services Ltd. The Section Champion, Reserve & Youngstock Champion & Reserve (not already qualified) qualify to enter.*

*This Section is a qualifier for The National Welsh Championship Show 2023 - National Gelding In Hand Championship sponsored by Sarum Investments Ltd. All 1st & 2nd placed WPCS registered Section A, B, C, D & WPBR geldings in relevant classes (not already qualified) qualify to enter*

## WELSH SECTION B

Class 6 - Broodmare, Barren Mare & Gelding 4 years & over (Class will be split if sufficient entries)

Class 7 - Foal - colt or filly eligible for registration (progeny of Broodmare entered in class 6)

Class 8 - Yearling colt, filly or gelding

Class 9 - 2 or 3 yr old colt, filly or gelding

Class 10 - Stallion 4 years and over

**Sec B Youngstock Championship:** 1st & 2nd from classes 7 - 9 eligible

*The William Bruce Memorial Trophy will be presented to the Sec B Youngstock Champion*

**Adult Championship:** 1st & 2nd from classes 6 & 10 eligible - **Kindly sponsored by Northview Stud**

**Sec. B Medal Championship:** Youngstock Ch & Res & Adult Ch & Res eligible

*The Strathisla Stud trophy will be presented to the Champion Sec. B*

*This Section is a qualifier for The National Welsh Championship Show 2023 - National Section B In-Hand Championship sponsored by Greenlands Insurance Services Ltd. The Section Champion, Reserve & Youngstock Champion & Reserve (not already qualified) qualify to enter.*

*This Section is a qualifier for The National Welsh Championship Show 2023 - National Gelding In Hand Championship sponsored by Sarum Investments Ltd. All 1st & 2nd placed WPCS registered Section A, B, C, D & WPBR geldings in relevant classes (not already qualified) qualify to enter.*

## WELSH SECTION C

Class 11 - Broodmare, Barren Mare & Gelding 4 years & over (Class will be split if sufficient entries)

Class 12 - Foal – colt or filly eligible for registration (progeny of Broodmare entered in class 11)

Class 13 - Yearling colt, filly or gelding

Class 14 – 2 & 3 yr old colt, filly or gelding

Class 15 - Stallion 4 years and over

**Sec C Youngstock Championship:** 1st & 2nd from classes 12- 14 eligible

*The Kyarlins Trophy will be presented to the Youngstock Champion*

**Adult Championship:** 1st & 2nd from classes 11 & 15 eligible

**Sec. C Medal Championship:** Youngstock Ch & Res & Adult Ch & Res - **Kindly sponsored by Rugworks Equine Laundry**

*This Section is a qualifier for The National Welsh Championship Show 2023 - National Section C In-Hand Championship sponsored by Greenlands Insurance Services Ltd. The Section Champion, Reserve & Youngstock Champion & Reserve (not already qualified) qualify to enter.*

*This Section is a qualifier for The National Welsh Championship Show 2023 - National Gelding In Hand Championship sponsored by Sarum Investments Ltd. All 1st & 2nd placed WPCS registered Section A, B, C, D & WPBR geldings in relevant classes (not already qualified) qualify to enter.*

## WELSH SECTION D

Class 16 - Broodmare, Barren Mare & Gelding 4 years & over (Class will be split if sufficient entries)

Class 17 - Foal – colt or filly eligible for registration (progeny of Broodmare entered in class 16)

Class 18 - Yearling colt, filly or gelding

Class 19 - 2 or 3 yr old colt, filly or gelding

Class 20 - Stallion 4 years and over

**Sec D Youngstock Championship:** 1st & 2nd from classes 17 - 19 eligible - **Kindly sponsored by Serenad Stud**

*The Llanarth Magic Knight Trophy will be presented to the Youngstock Champion*

**Adult Championship:** 1st & 2nd from classes 16 & 20 eligible - **Kindly sponsored by Serenad Stud**

**Sec. D Medal Championship:** Youngstock Ch & Res & Adult Ch & Res eligible - **Kindly sponsored by Azgard Stud**

*The NSWPC Shield will be presented to the Champion*

*This Section is a qualifier for The National Welsh Championship Show 2023 - National Section D In-Hand Championship sponsored by Greenlands Insurance Services Ltd. The Section Champion, Reserve & Youngstock Champion & Reserve (not already qualified) qualify to enter.*

*This Section is a qualifier for The National Welsh Championship Show 2023 - National Gelding In Hand Championship sponsored by Sarum Investments Ltd. All 1st & 2nd placed WPCS registered Section A, B, C, D & WPBR geldings in relevant classes (not already qualified) qualify to enter.*

## WELSH PARTBRED

Class 21 - Stallion Mare or Gelding 4 yrs & over

Class 22 - Youngstock 3 yrs & under - *Highest placed foal eligible for Foal Championship*

*1st & 2nd from class 22 eligible for Youngstock Championship*

**Welsh Partbred Medal Championship:** 1st & 2nd in class 21 & 22 eligible - *Kindly sponsored by Tylo Stud*

*This Section is a qualifier for The National Welsh Championship Show 2023 - National WPBR In-Hand Championship sponsored by Greenlands Insurance Services Ltd. The Section Champion, Reserve & Youngstock Champion & Reserve (not already qualified) qualify to enter.*

*This Section is a qualifier for The National Welsh Championship Show 2023 - National Gelding In Hand Championship sponsored by Sarum Investments Ltd. All 1st & 2nd placed WPCS registered Section A, B, C, D & WPBR geldings in relevant classes (not already qualified) qualify to enter.*

A Special Welsh Rosette will be awarded to each Medal Winner - **Kindly donated By Goldenwood Stud**

Best Gelding & Best Veteran Rosettes will be awarded in all appropriate Welsh In Hand Classes.

The winners will be eligible for the relevant Championships

## **WELSH IN HAND CHAMPIONSHIPS**

### **FOAL CHAMPIONSHIP**

*Kindly sponsored - by Vaka Stud*

1st & 2nd from Classes 2, 7, 12 & 17 & highest placed foal from class 22 eligible

### **YOUNGSTOCK CHAMPIONSHIP**

*Kindly sponsored by Rivermay Sud*

Youngstock Ch & Res from Sec A, B, C, D & winner of class 22

*The ADWPCEG Salver will be presented to the Champion*

### **GELDING CHAMPIONSHIP**

The highest placed gelding in each appropriate class eligible. Rosette must be worn in the ring

### **VETERAN CHAMPIONSHIP**

The highest placed veteran (15 yrs & over) in each appropriate class eligible. Rosette must be worn in the ring

## **OVERALL WELSH IN HAND CHAMPIONSHIP**

*Kindly sponsored by - Charmfield Rosettes*

**Medal Ch & Res from Sec A, B, C, D & WPB eligible**

*The Richard Deptford Memorial Trophy will be presented to the Champion*

## **RING 2 – START 9AM**

### **SHETLAND - Judge: Jane Barry (Kinkell)**

(Classes may be split standard/miniature if sufficient entries - please state on entry form)

Class 23 - Shetland - Broodmare 4yrs and over with foal at foot

Class 24 - Shetland - Foal – colt or filly eligible for registration (progeny of the above)

*Shetland Pony Society Rosette awarded to the winner of class 24*

*The Mingulay Shield will be presented to the best Miniature foal*

Class 25 - Shetland - Yearling colt, filly or gelding

Class 26 - Shetland - 2 or 3 yr old colt, filly or gelding

**Junior Championship** - 1st & 2nd from classes 24, 25 & 26 eligible - *Kindly sponsored by Lochfleet Shetlands*

*Shetland Pony Society Rosettes awarded to the Junior Ch & Res*

Class 27 – Shetland Mare or gelding 4 yrs & over

Class 28 - Shetland – stallion 4 yrs & over

**Senior Championship** - 1st & 2nd from classes 23, 27 & 28 eligible - *Kindly sponsored by Lochfleet Shetlands*

*Shetland Pony Society Rosettes will be awarded to the Ch & Res*

Shetland Championship- Jnr Ch & Res + Adult Ch & Res eligible - *Kindly sponsored by Ramparts Shetland Ponies*

*Shetland Pony Society Rosette awarded to the highest placed miniature*

*Shetland Pony Society Rosette awarded to the highest placed gelding*

*The Redbrae Trophy will be presented to the highest placed gelding*



**Judge: Jane Barry (Kinkell)**

**MOUNTAIN AND MOORLAND IN-HAND** If any class in this section has more than 6 entries from one breed, classes will be split

Class 29 - M&M Breeds - Broodmare, Barren Mare & Gelding 4 years & over (Class will be split if sufficient entries)

Class 30 - M&M Breeds - Foal – colt or filly eligible for registration (progeny of Broodmare entered in class 29)

Class 31 - M&M Breeds - Yearling colt, filly or gelding

Class 32 - M&M Breeds - 2 or 3 Year old colt, filly or gelding

Class 33 - M&M Breeds – Stallion 4 Yrs old & over

**M&M Youngstock Championship** - 1st & 2nd from class 30,31 & 32 eligible

**M&M Adult Championship** - 1st & 2nd from classes 29 & 33 eligible - *Kindly sponsored by Neilson Equine*

**M&M Championship** - Adult Ch & Res + Youngstock Ch & Res eligible

*The Muchako Trophy will be presented to the best Large M&M in hand*

#### **AFTER JUDGES LUNCH BREAK**

**RING 2- JUDGE: Jane Barry**

**YOUNG HANDLERS - Open to any breed 4 yrs & over, mares and geldings only.**

**Hard hats must be worn. Rosettes to all**

Class 34 - Under 10 years (may be accompanied by an adult)

Class 35 - 10 to 16 years

**CHAMPIONSHIP** - 1st & 2nd from classes 34 & 35 eligible - *Kindly Sponsored by NFU Mutual*

Class 36 - **Open Mountain & Moorland Lead Rein** mare or gelding, 4 years and over, not exceeding 122cms, registered in the main body of their respective Breed Society Stud. Riders not to have attained their 9th birthday before 1st January in the current year. To be led by an attendant and shown in a snaffle bridle, the lead rein to be attached to the nose band only. **Rosettes to all**

Class 37 - **Open Mountain & Moorland First Ridden**, mare or gelding, 4 years and over, not exceeding 128cms, registered in the main body of their respective Breed Society Stud. To be shown in any suitable bridle. Riders not to have attained their 12th birthday before 1st January in the current year. **Rosettes to all**

**Mini Ridden Championship** - 1st & 2nd from classes 36 - 37 eligible - *Kindly Sponsored by NFU Mutual*

*The ADWPCEG Trophy will be presented to the champion*

This Section is a qualifier for The National Welsh Championship Show 2023 - National Ridden Welsh Breeds Championships sponsored by The Brynseion Stud. All 1st & 2nd placed WPCS registered Welsh Section A, B, C, D, Welsh LR & FR exhibits (not already qualified) in relevant classes open to Welsh breeds qualify to enter.

**NOVICE RIDDEN WELSH - Judge: Lorraine Clynes Thomas**

Class 38 - Welsh A & B - stallion, mare or gelding 4 yrs. & over

Class 39 - Welsh C & D - stallion, mare or gelding 4 yrs. & over

This Section is a qualifier for The National Welsh Championship Show 2023 - National Ridden Welsh Breeds Championships sponsored by The Brynseion Stud. All 1st & 2nd placed WPCS registered Welsh Section A, B, C, D, Welsh (not already qualified) in relevant classes open to Welsh breeds qualify to enter.

**NOVICE RIDDEN M & M - Judge: Jane Barry**

Class 40 - M&M Purebred (Excl Welsh) - stallion, mare or gelding 4 yrs. & over

Class 41 - Part Bred M&M - stallion, mare or gelding 4 yrs. & over

Class 41 is a qualifier for The National Welsh Championship Show 2023 - National Ridden Welsh Part Bred Championships. All 1st & 2nd placed WPCS registered Welsh Part Bred exhibits in each class (not already qualified) qualify to enter. Unregistered qualifiers with 12.5% Welsh blood may retrospectively register with WPCS prior to entry

**Novice Ridden Championship** - 1st & 2nd from classes 38 - 41 eligible

**OPEN RIDDEN WELSH - Judge: Lorraine Clynes Thomas**

Class 42 - Welsh A & B - stallion, mare or gelding 4 yrs. & over

Class 43 - Welsh C & D - stallion, mare or gelding 4 yrs. & over

This Section is a qualifier for The National Welsh Championship Show 2023 - National Ridden Welsh Breeds Championships sponsored by The Brynseion Stud. All 1st & 2nd placed WPCS registered Welsh Section A, B, C, D, Welsh (not already qualified) in relevant classes open to Welsh breeds qualify to enter.

### **OPEN RIDDEN M & M - Judge: Jane Barry**

Class 44 - M&M (Excl Welsh) - stallion, mare or gelding 4 yrs. & over

Class 45 - Part Bred M&M - stallion, mare or gelding 4 yrs. & over

Class 45 is a qualifier for The National Welsh Championship Show 2023 - National Ridden Welsh Part Bred Championships. All 1st & 2nd placed WPCS registered Welsh Part Bred exhibits in each class (not already qualified) qualify to enter. Unregistered qualifiers with 12.5% Welsh blood may retrospectively register with WPCS prior to entry  
**Open Ridden Championship** - 1st & 2nd from classes 42 - 45 eligible

### **RING 3 - START 9AM**

#### **MIXED IN HAND CLASSES - Judge: Abbie Ryce**

Open to registered and unregistered horses/ponies - stallion, mare or gelding. Exhibitors do not need to be a member of any society to enter

**In the interest of safety all stallions and colts 2 years old and over must be suitably bitted and led by a handler that has attained their 14th birthday before 1st January of the current year.**

Class 46 - Mixed Youngstock 3 yrs & under - open to any breed/type - colt, filly or gelding

Class 47 - SHP/Show Pony 148cm and under

Class 48 - Arab/Partbred Arab

Class 49 - Hack/Riding Horse/Show Hunter over 148 cm

Class 50 - Coloured - any type to include Piebald, Skewbald, Palomino, Apappaloosa, Spotted, Roan etc

Class 51 - Cob - open to any height or type

Class 52 - M&M - open to any breed

Class 53 - Veteran - open to any type 15 yrs plus

**In Hand Championship:** 1st & 2nd from classes 46- 53 eligible

## **THE NFU MUTUAL SUPREME IN HAND CHAMPIONSHIP**

**Champion & Reserve from Overall Welsh In Hand Championship, Shetland Championship  
M&M Championship & Mixed In Hand Championship**

***Kindly sponsored by NFU Mutual***

***\*\*SUPREME CHAMPION £35 & RESERVE SUPREME CHAMPION £15\*\****

***Vouchers generously donated by Galloway & MacLeod Ltd***

**RING 3 - MIXED RIDDEN CLASSES-Judge: Abbie Ryce** Open to registered and unregistered horses/ponies 4yrs old & over - stallion, mare or gelding. Exhibitors do not need to be a member of any society to enter

**N.B Stallions may not be ridden by a Junior who has not attained their 12th birthday by 1st January in the current year for small breeds/types or their 14th birthday by 1st January in the current year for large breeds/types.**

Class 54 - M&M - open to any breed

Class 55 - Hack/Riding Horse/Show Hunter over 148cms

Class 56 - Coloured - any type to include Piebald, Skewbald, Palomino, Apappaloosa, Spotted, Roan etc

Class 57 - Cob - open to any height or type

Class 58 - SHP/Show Pony 148 cms & under

Class 59 - Arab/Partbred Arab

Class 60 - Veteran - open to any type 15 yrs plus

**Ridden Championship:** 1st & 2nd from classes 54 - 60 eligible

### ***Catering provided by Marco's Scrán Van***

Deborah 07464768453



Selling bacon rolls,  
burgers, hotdogs,  
chicken fillets, chips,  
chips and cheese, tea,  
coffees, tins of juice  
**CASH ONLY**

## ***Annie Rees Photography***

Call 07975 786 099

[anniereesphotography@gmail.com](mailto:anniereesphotography@gmail.com)

[www.anniereesphotography.co.uk](http://www.anniereesphotography.co.uk)

*Rosettes & sashes supplied by Charmfield Rosettes*



#### **RING 4 - START 9AM**

#### **WORKING HUNTER CLASSES - Judge: Kirsty Errington Anderson (Course Builder Lesley Campbell)**

Class 61 – X Poles - Lead rein/assisted - Open to mares or geldings, 4 years old or over not exceeding 148cms. No age limit for riders. This class is intended for novice/nervous riders not confident to attempt a course on their own. Pony/rider combinations entered in this class are not eligible to compete in any other class except class 62

Class 62 - 40cm - Cradle Stakes Pony

Class 63 - 60cm - Nursery Stakes Pony

Class 64 - Open 75cm

Class 65 - Open 90 cm

Class 66 - Open 1 mtr

**Working Hunter Championship:** 1st & 2nd from classes 62 - 66 eligible

### **THE NFU MUTUAL SUPREME RIDDEN CHAMPIONSHIP**

***Kindly sponsored by NFU Mutual***

***\*\*SUPREME CHAMPION £35 & RESERVE SUPREME CHAMPION £15\*\****

***Vouchers generously donated by Galloway & MacLeod Ltd***

**Champion & Reserve eligible from Mini Ridden Championship, Novice Ridden Championship, Open Ridden Championship, Mixed Ridden Championship & Working Hunter Championship**

#### **TIMETABLE**

The timetable is a guide only & may be subject to change. It is the competitor's responsibility to check the rings to ensure they do not miss their class. It is anticipated Judges will take a lunch break after the Supreme In Hand

<b>RING 1 – START 9AM</b>	<b>RING 2 – START 9AM</b>	<b>RING 3 – START 9AM</b>	<b>RING 4 -START 9AM</b>
<b>WELSH IN HAND</b>	<b>SHETLAND IN HAND</b>	<b>MIXED IN HAND CLASSES</b>	<b>WORKING HUNTER</b>
<b>WELSH IN HAND CHAMPIONSHIPS</b>	<b>MOUNTAIN AND MOORLAND IN-HAND</b>	<b>MIXED IN HAND CHAMPIONSHIP</b>	<b>CLASSES TO FOLLOW ON</b>
<b>NFU MUTUAL SUPREME IN HAND CHAMPIONSHIP</b>			
<b>LUNCH BREAK</b>			
<b>RIDDEN WELSH</b>	<b>YOUNG HANDLERS</b>	<b>MIXED RIDDEN</b>	<b>WORKING HUNTER</b>
<b>NOVICE RIDDEN</b>	<b>L/REIN &amp; F/RIDDEN</b>	<b>CLASSES TO FOLLOW ON</b>	<b>CONTINUED</b>
<b>OPEN RIDDEN</b>	<b>NOVICE RIDDEN M&amp;M</b>	<b>CHAMPIONSHIP</b>	<b>CHAMPIONSHIP</b>
<b>CHAMPIONSHIP</b>	<b>OPEN RIDDEN M&amp;M</b>		
<b>NFU MUTUAL SUPREME RIDDEN CHAMPIONSHIP</b>			

**This show is a qualifier for the Caledonian Showing Championships to be held at**

**Highfield @ Howe, near Ladybank, Fife on 13/14/15 October 2023**

Every horse & pony placed 1st in all Inhand, Ridden Showing classes (not fun classes) & Working Hunter/Pony classes will qualify to compete in any appropriate class at the Finals. All Champions & Reserves will qualify for the Champion & Reserves Stakes Finals. Qualification will be from placings, no qualification cards will be awarded in the ring, and no qualification can go down the line. All qualified horses and ponies will be listed on the Caledonian Showing Championship Show's website

[www.caledonianchampionships.webs.com](http://www.caledonianchampionships.webs.com)

### GRATEFUL THANKS TO OUR SPONSORS

The committee wishes to thank all our judges, stewards, sponsors & exhibitors for your support and hope you enjoy your day. Your feedback is important to us so please feel free to contact us with your comments, ideas or suggestions. To contact us email [info@nswpca.co.uk](mailto:info@nswpca.co.uk)

Results will be available on [www.nswpca.co.uk](http://www.nswpca.co.uk)



King Street  
Stonehouse  
Larkhall  
ML9 3EH  
01698 79191955



Turriff Business Centre  
9-12 Markethill Industrial Est  
Market St  
Turriff  
AB53 4AG  
Tel 01888 588483

#### Thistleview Stud



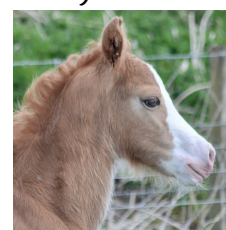
#### Northview Stud



#### Rugworks Equine Laundry



#### Azgard Stud



#### Tylo Stud



#### Vaka Stud



#### Rivermay Stud



#### Lochfleet Shetlands



#### Ramparts Shetland Ponies

#### Neilson Equine



#### Seranad Stud



#### Charmfield Rosettes





**THIS SHOW IS RUN IN ACCORDANCE WITH NSWPCA, WPCS, NPS Scotland & SPSBS RULES**

**1. HORSE RIDING IS A DANGEROUS SPORT AND YOU PARTICIPATE AT YOUR OWN RISK**

2. The committee reserves the right to cancel or amalgamate classes in the event of insufficient entries.
3. All entries must be registered or eligible for registration in the Welsh Stud Book or appropriate Breed Society. Registered numbers must be stated, including the numbers of the sire and dam, before the entry is accepted.
4. The Committee reserves the right to refuse an entry. Entries must include the correct fee to be accepted. Cheques that are not honoured by the bank may result in suspension of membership or refusal of future entries to Association events.
5. Entry fees are non-refundable under any circumstances
6. Exhibitors must not enter an animal in any Show when that animal will be judged by a person who has or has had a financial interest in that particular exhibit (in line with current NPS rulings regarding production of ponies). In this instance the exhibitor will be asked to leave the ring and a refund offered.
7. Exhibitors are requested to note the timetable, animals must be forward in time. Classes will not be held if exhibitors are entered in more than one class
8. Where an animal is entered in more than one class, the Committee takes no responsibility if a clash occurs. Latecomers will ONLY be admitted to the ring at the discretion of the Judge.
9. Stallions and Colts: All stallions and colts 2 years old or over must hold a Stallion Licence, unless otherwise governed by their individual Breed Society. A stallion is accepted as such when 4 years of age. Colts may be licensed from 1st January of their second year. In the interest of safety all stallions and colts, 2 years old and over must be suitably bitted and led by a handler that has attained their 14th birthday before 1st January of the current year. Stallions may not be ridden by a Junior who has not attained their 12th birthday by 1st January in the current year for small breeds or their 14th birthday by 1st January in the current year for large breeds.
10. **The Judge's decision is final.**
11. The Committee or any of its assistants or stewards will not be responsible for any loss, injury or damage that may happen to exhibitors or their assistants or other members of the public, or to any animal or property or to any vehicle brought into the Showground or leaving the same under any circumstances.
12. All animals must be sound. If in the opinion of the Judge, an animal is considered to be unsound, the exhibitor will be given the option of withdrawing the exhibit from the class. The Judge's decision is final.
13. Any animal found to be suffering from a contagious or infectious disease is to be removed from the Showground immediately at the request of the Show Committee.
14. Objections MUST be made in writing within thirty minutes of the event concerned and lodged with the Show Secretary together with the sum of £25. Objections will be referred to the Committee which will return the £25 if the objection is upheld.
15. Correctly secured British Standard Skull Caps/Riding hats to current safety standards must be worn by riders at all times. Body Protectors. Whilst we are aware it is now compulsory in the BSPS & NPS rules that all riders should wear body protectors in the jumping phase, we are happy to leave it to the judgement of each rider and/or parent/guardian of junior riders as to whether they are worn or not.
16. The safety of all children showing animals is the full responsibility of their parent or guardian.
17. Trophies are perpetual and the winner of any trophy or cup is responsible for its safe return to the Show Secretary in time for the following year's show. All trophies remain the property of the Association and must be signed for in line with the terms and conditions for trophy winners collection form.
18. The Committee reserves the right to substitute a judge at short notice if conditions warrant.
19. Bad language and/or abusive behaviour towards people or animals will not be tolerated and will result in potentially being asked to leave the showground.
20. The use of any artificial aid (e.g. plastic bags, excessive use of whips, drinks cans etc.) to excite an animal being shown is not acceptable and should not be used at any NSWPCA show.
21. Please read the disclaimer and conditions of entry. NSWPCA will only accept an entry if you agree to be bound them
22. Please park with consideration & do not muck out horseboxes/trailers onto the car park and please take all rubbish home.
23. Children must be supervised at all times. Dogs to be kept on leads and owners must clear up after them.

**SPS-BS Rules** 2.3 Classes must be confined to SPS-BS registered ponies. Ponies must be named on the entry form and in the catalogue if one is produced. Society rosettes must only be given to ponies registered with the Society or to foals eligible for registration. 2.4 Three-year-old fillies with foals at foot may not be shown. All foals must be a minimum of three weeks old on the day of the Show. 2.5 To enter a stallion in any class (in-hand or performance) at an affiliated show, entire males aged 4 years old and over must have an "S" number and have been successfully through either the SPSBS Stallion assessment prior to 2006 or the current SPSBS Voluntary Veterinary Examination. Ridden stallions MUST display a stallion bridle badge. In hand colts/stallions of two years old or over must be shown bitted and are advised to display a stallion bridle disc which are available to purchase from the SPSBS. 2.6 There must be no colts or entire males in Young Handlers classes. Children under 14 years old may not show colts (excluding foals) or entire males in In-hand classes. Children under 12 years old on the day of the show may not show entire males in ridden classes. In the interests of safety, hard hats of the current safety standard must be worn by all handlers aged 14 years or under in In-hand classes. Exhibitors should not kneel but remain standing while in the ring. Hard hats of the current safety standard must be worn by all exhibitors, irrespective of age, in ridden classes. Ridden and driven ponies must be 4 years old or over. In ridden Classes, if a rider falls off at any time whilst in the ring, both pony and rider must leave the ring, rider dismounted, and take no further part.

**Entries will only be accepted on an official NSWPCA entry form which must be signed & dated or via Entrymaster <https://nswpca.lite.events>. By entering you indicate that you have read and accepted the NSWPCA disclaimer and conditions of entry and agree to be bound by them. Please park with consideration and do not muck out trailers/horseboxes onto the car park and please pick up your horses droppings. All rubbish should be taken home or placed in the bins provided. Children must be supervised at all times. Dogs to be kept on leads and owners must clean up after them. Thank you**